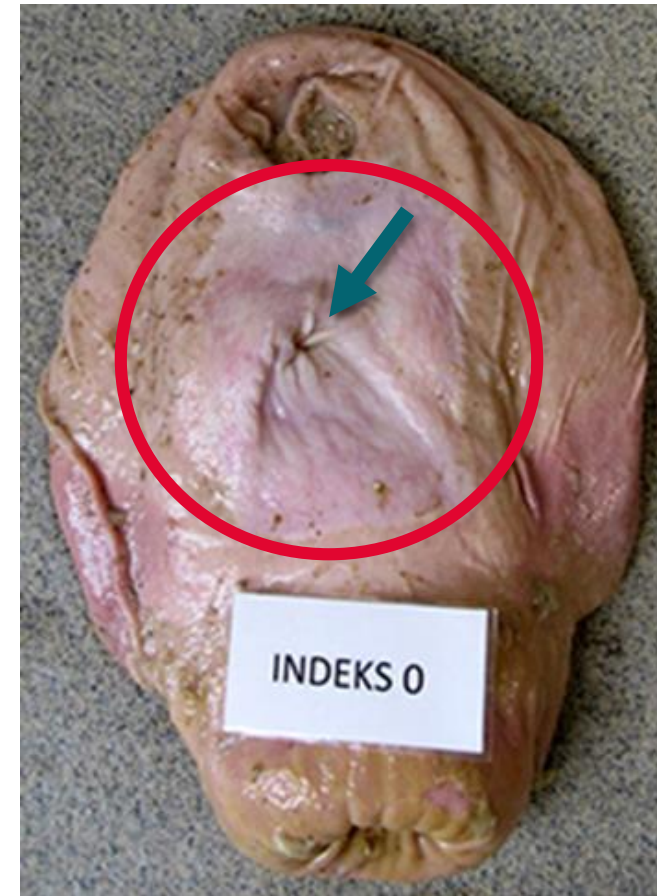
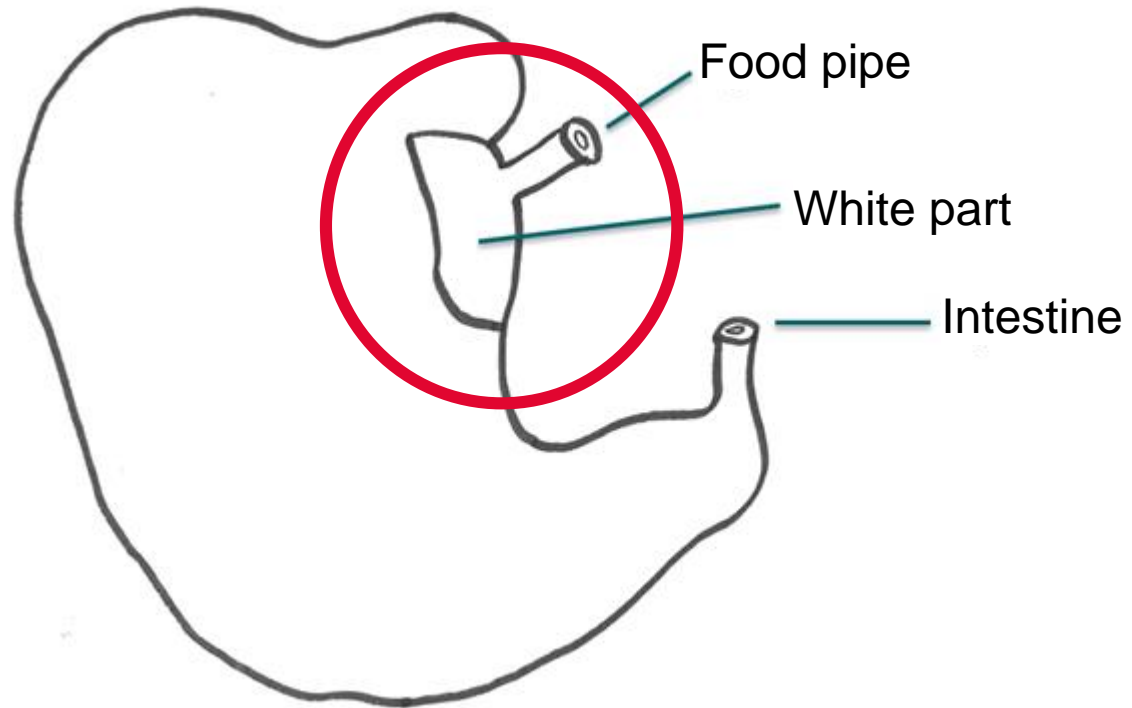


# Stomach ulcers

# Where is the ulcers?

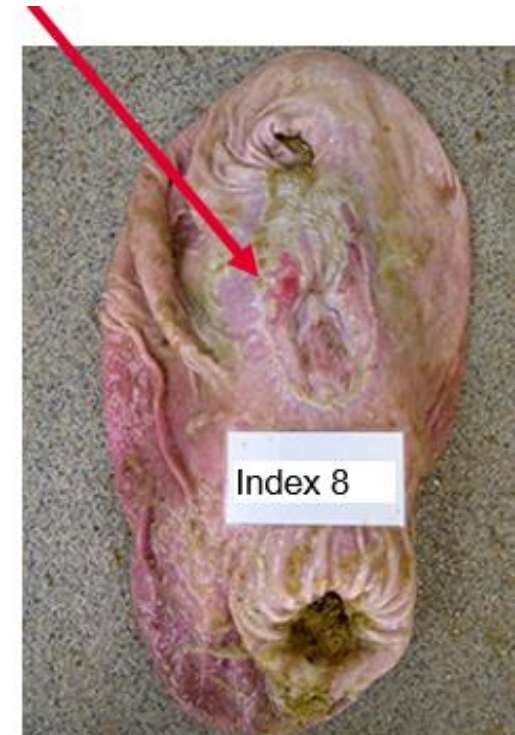
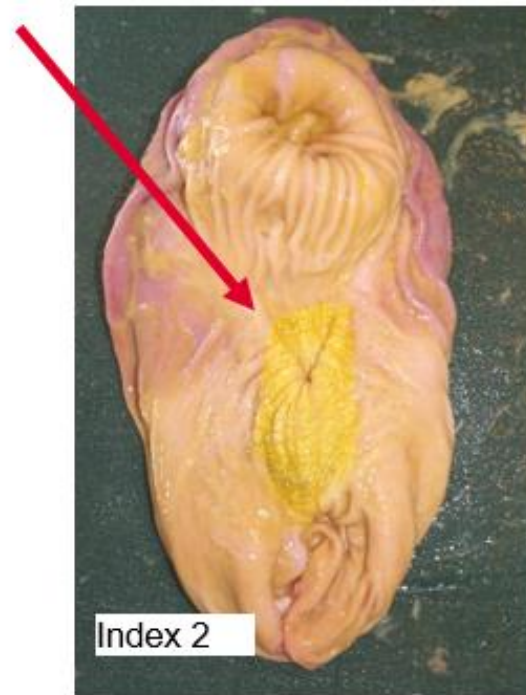


# Ulcer-index (acute index)

## Acute damage

Aktuelle forandringer

Forandring	Sår-index
Ingen forandringer	0
Forhorning	1
	2
	3
Erosioner	4
	5
	5
Sår	6
	7
	8



# Scar-index

## Old, chronic damage

### Afhelede forandringer

Forandring	Ar-index
Ingen forandringer	0
Ar	6
	7
	8
Striktur	9
	10



# Stomach-USK

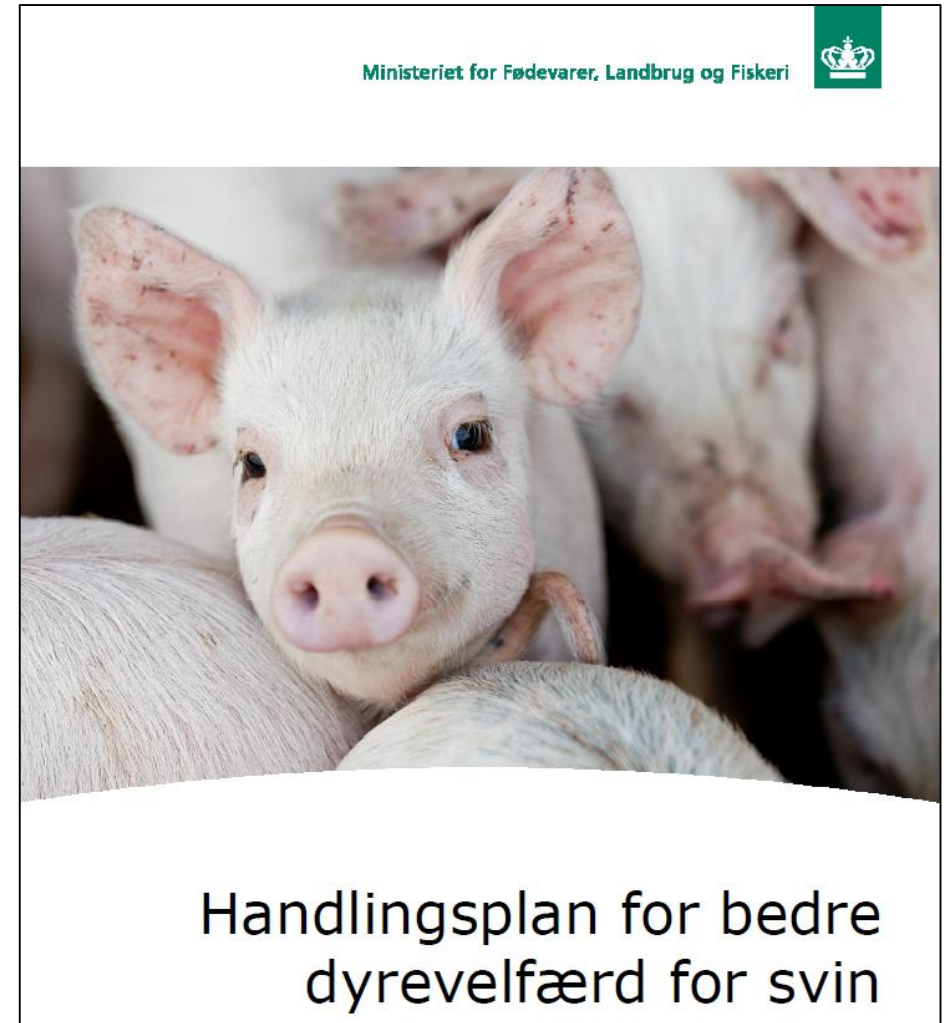
- The farm veterinarian orders it
  - The slaughterhouse removes and send the stomachs
  - The Laboratorium for Svinesygdomme in Kjellerup examines them
- 
- 20 stomachs





# Stomach ulcers sows – national screening

Testing all sows in  
Denmark over 3 years



# Stomach ulcers sows

In 2011

1.023 stomachs

**Index 8-10 = 25 %**

National screening 2017-2018

18.548 stomachs

**Index 8-10 = 9 %**



# Stomach ulcers pigs (7-30 kg)

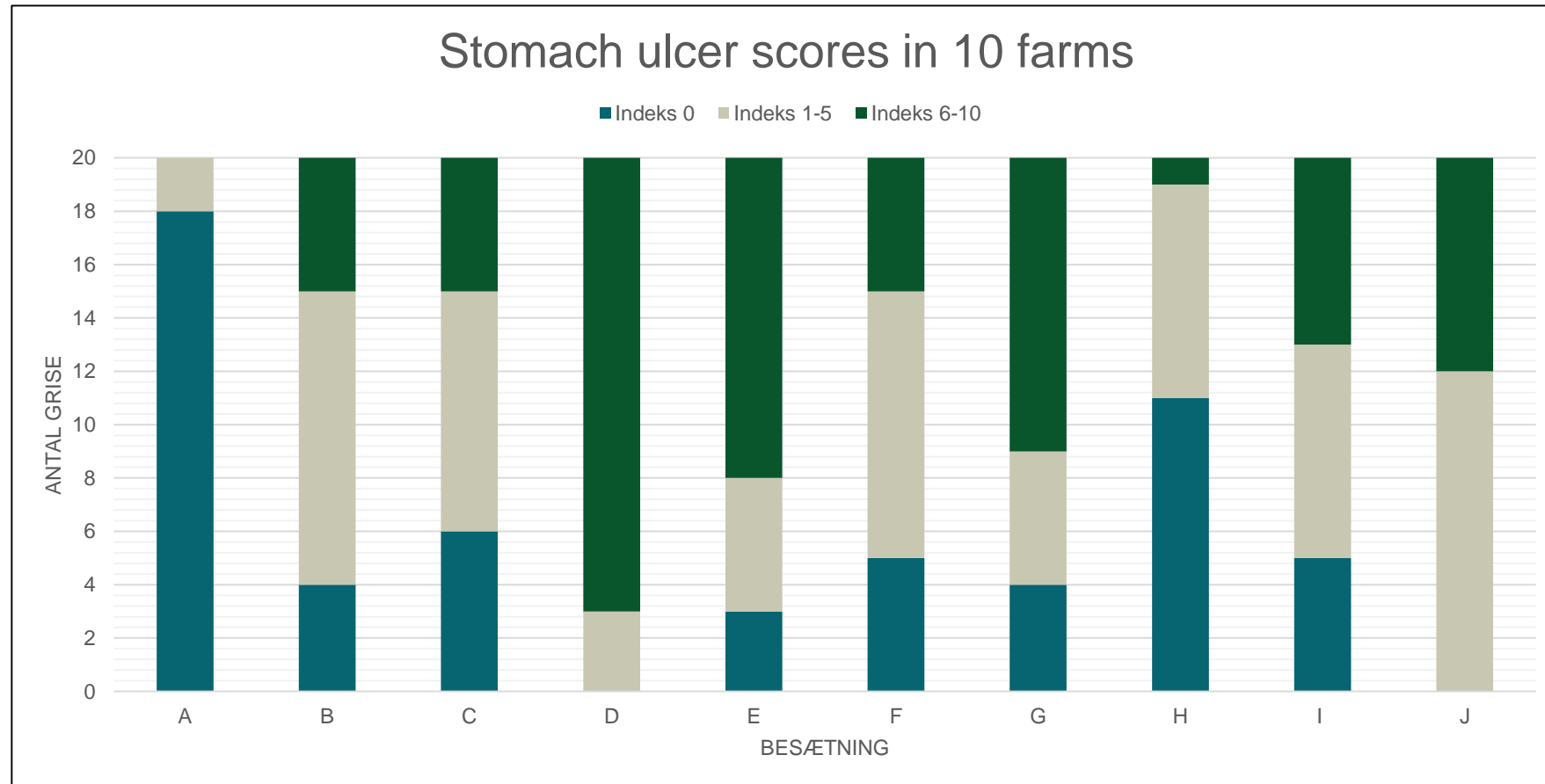
200 stomachs from 10 farms

**Total-index 8-10 = 10 %**





# Stomach ulcers pigs (7-30 kg)



## Stomach ulcers and productivity

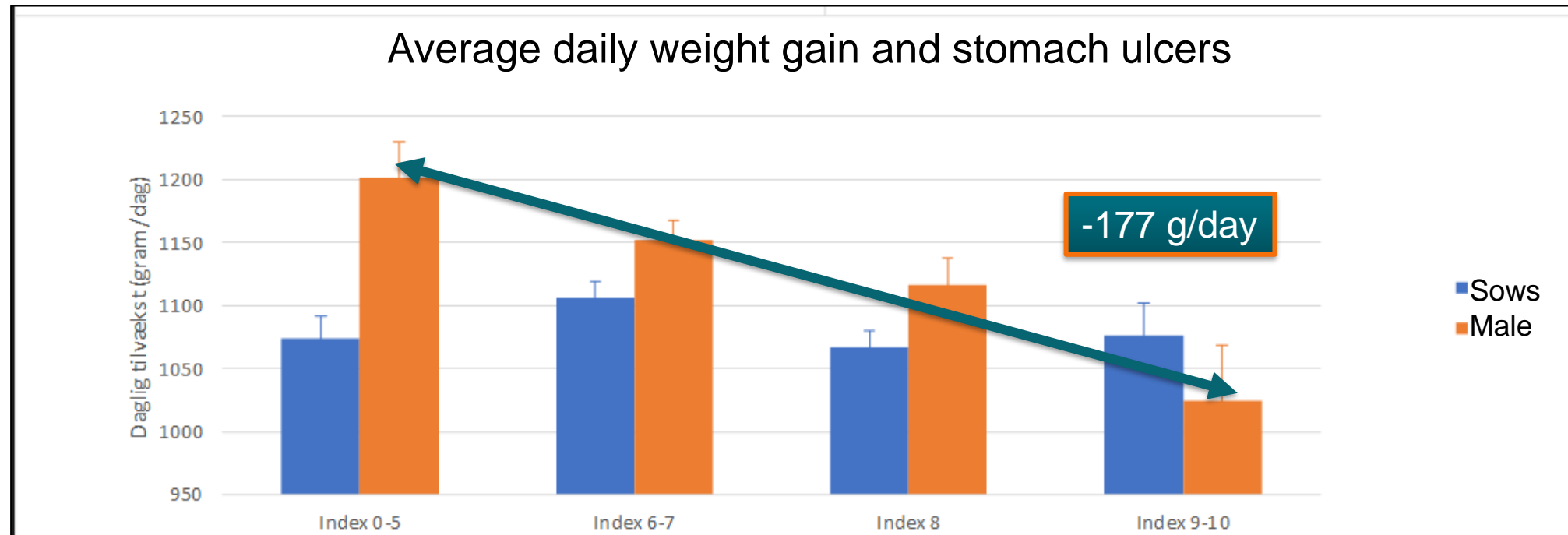
### **Slaughterpigs:**

Slow growth if the pig have stomach ulcers (total-index 8-10)

Amount of feed (feed conversion ratio) not affected



# Stomach ulcers and productivity



# The content of the stomach

Water-like:



Fine grinding – not good

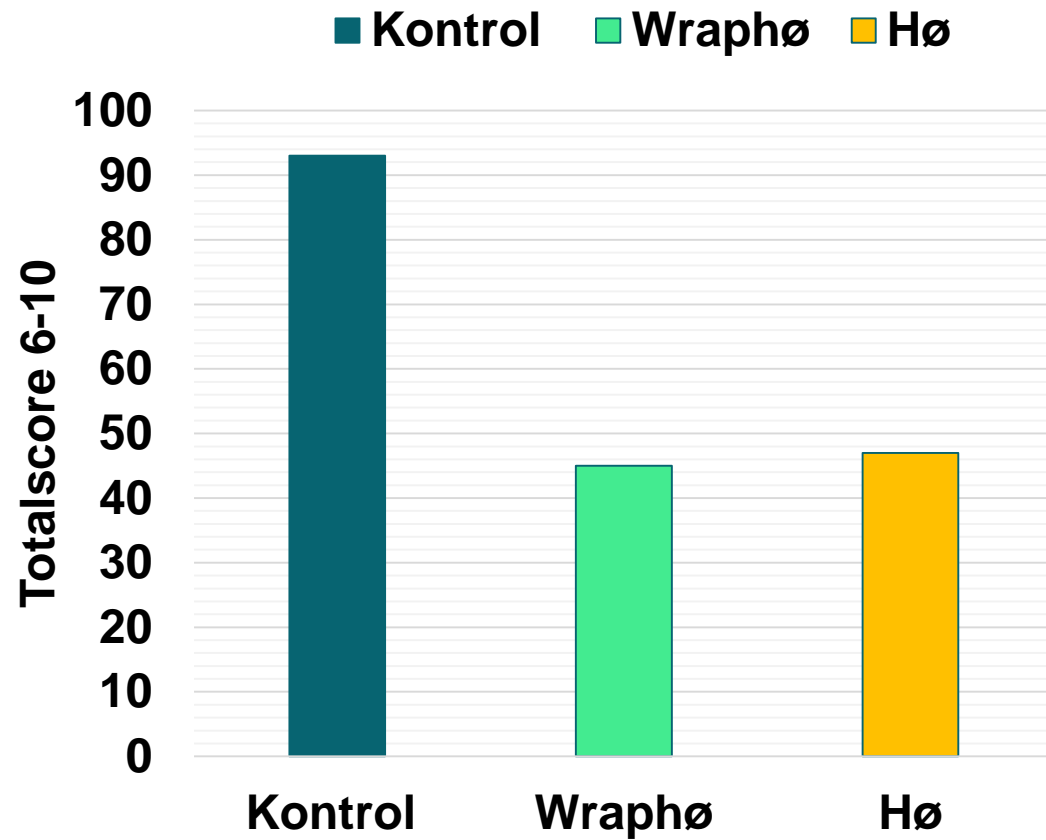
Dry:



Large grinding – better

BUT: fine grinding is better for productivity

# Use wrap or hey (hø)





## Use wrap or hey (hø)

- No effect on productivity – no problem!
- Can be messy – maybe a problem
- Bonus: can use it as enrichment / playing material and for nest-building



## The mess...

